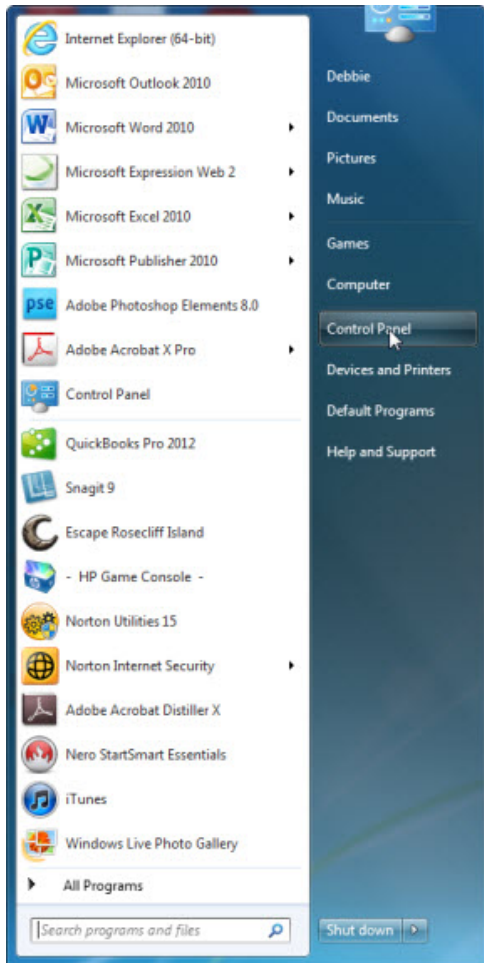


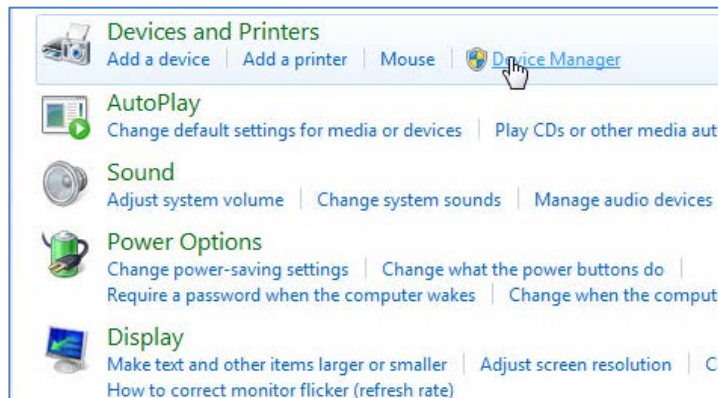
# Find the COM port for your Acoustic Fluid Logger

To find which COM port your Acoustic Fluid Logger is using on your computer, first, hook up the USB cable from the AFL IV to the computer USB connector. Turn on the AFL IV and listen for the Windows tone that says the computer has found the instrument.

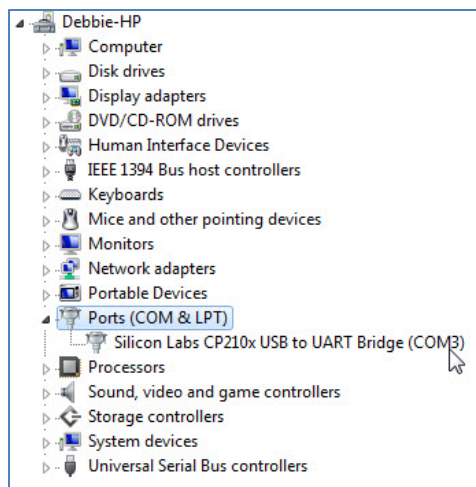
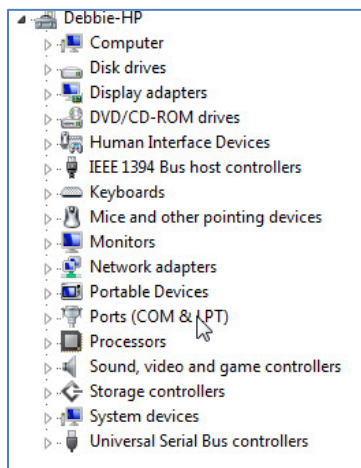
Next, click the Windows start menu in the bottom left of the screen and click on Control Panel, as shown at left. From there, click Hardware and Sound, as shown below.



Find Devices and Printers, then click Device Manager, as shown below.



Click on Ports (COM & LPT), as shown below left. This displays the COM port in use by the USB. See below: COM3



Next, input the COM number in the Sage AFL software screen. This will enable the testing instrument.