

Pressure Pulse Gas Guns



Pressure Pulse specifications

Pressure Pulse Gas Gun

1,500 psi (at left)

Pressure rating

- 1,500 psi/10,342 kPa standard pressure

Thread size

- 1,500 psi - 2" line pipe

Weight:

- 1,500 psi - 10 lbs. (4.5 kgs)

Pressure Pulse Gas Gun

3,000 psi (at right)

Pressure rating:

- 3,000 psi/20,685 kPa high pressure

Thread size

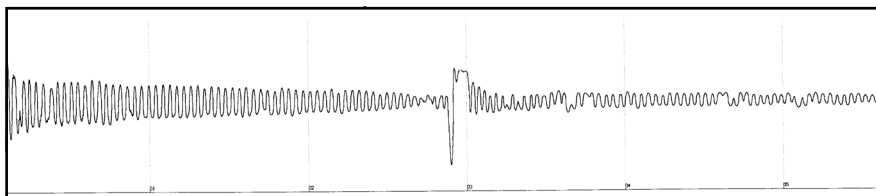
- 3,000 psi - 2 7/8" EUE / 2 1/2" line pipe

Weight:

- 3,000 psi - 13lbs. (5.9 kgs)

Compact gas guns power up fluid level testing

- Rated 1,500 psi or 3,000 psi with Quick-Connect liquid filled gauges
- Stainless steel components stand up to tough well conditions
- Rugged 3/8" push rod acts as the gun's Load/Fire trigger; shoot with heel of hand
- 200 psi gauge included for quick check of casing pressure before the fluid shot
- Stab-in pressure gauges rotate for ease of viewing
- Charge the gun with compressed gas, fire a gas shot down the well, and the gun's internal microphone registers the returning echoes, converts them to an electrical pulse, and delivers the signal to the **Acoustic Fluid Logger III, Acoustic Fluid Logger IV, or Acoustic Fluid Logger IV with Dynamometer**



Above: Square Root of fluid level Amplitude Plot recorded with Acoustic Fluid Logger III.
Right: Fluid level shot recorded with Acoustic Fluid Logger IV and Sage AFL software.

Sensitive internal microphone finds collars and fluid in a wellbore

Sage Technologies, Inc.

P.O. Box 1466
Grapevine, Texas USA 76099

Phone: 817-488-2579
Fax: 817-421-0607
Tollfree in U.S.: 877-488-2579

Email: info@sageoiltools.com
Website: www.sageoiltools.com

Pressure Pulse Gas Guns



1,500 psi Pressure Pulse Gas Gun

Components:

Pressure Pulse Gas Gun, internal microphone, 2.5 lb. CO² bottle, charge hose, maintenance and wellhead tools, 1,500 psi gauge, 200 psi gauge for checking surface casing pressure, O-ring kit, carrying case



3,000 psi Pressure Pulse Gas Gun

Components:

Pressure Pulse Gas Gun, internal microphone, 2.5 lb. CO² bottle, charge hose, maintenance and wellhead tools, 3,000 psi gauge, 200 psi gauge for checking surface casing pressure, O-ring kit, carrying case

Additional Gas Gun Options

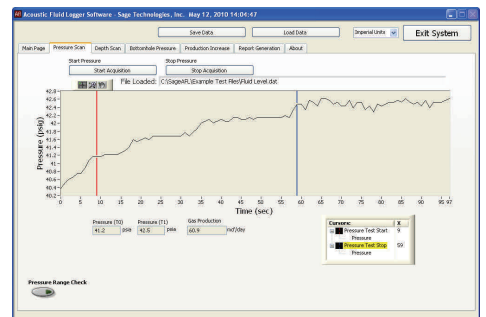
Besides operating on compressed CO², the Pressure Pulse Gas Guns can also operate:

- In implosion mode, which uses well gas for shots on wells with more than 50 psi pressure.
- On N², with optional nitrogen connectors., which allows operation in cold conditions.
- With pipe adapters to allow connection to any size wellbore.
- With the **Sage Pressure Transducer**, which replaces the gauge to record a pressure buildup and determine gas afterflow before shooting a fluid level with the AFL IV or AFL IV with Dynamometer.



Sage Pressure Transducer connects to the top of the Pressure Pulse Gas Gun before the fluid level test, to record casing pressure build-up.

Right: Before a fluid level test, the Sage Pressure Transducer delivers a pressure buildup on a well, for determination of gas afterflow. Pressure Transducer available with both Acoustic Fluid Logger IV and AFL IV with Dynamometer systems.



Find fluid levels deep or shallow, high or low pressure

Sage Technologies, Inc.
P.O. Box 1466
Grapevine, Texas USA 76099

Phone: 817-488-2579
Fax: 817-421-0607
Tollfree in U.S.: 877-488-2579

Email: info@sageoiltools.com
Website: www.sageoiltools.com